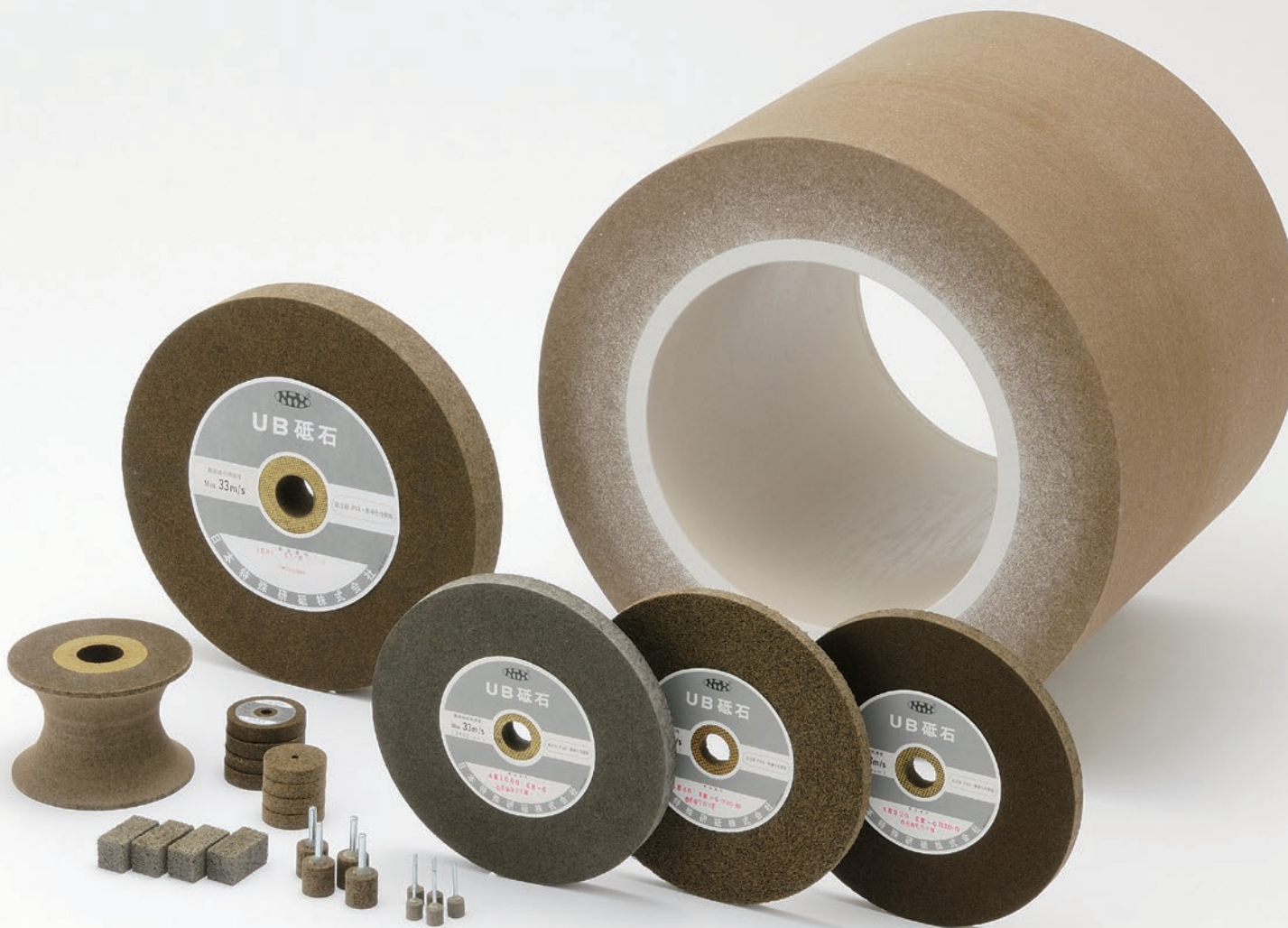


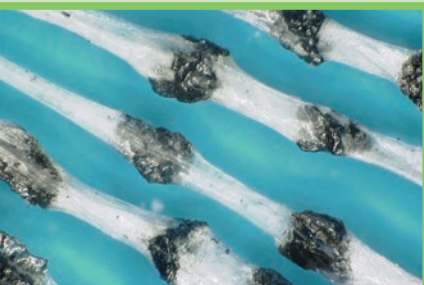
UB Grinding Wheels



Nippon Tokushu Kento Co., Ltd.

UB Grinding Wheels,

made from PVA synthetic fibers developed by our spinning technology and bonded with thermosetting resins. Abrasive grains are tightly bound inside of PVA fibers. Its elasticity effect offers smooth and continuous grinding without scratches and heat generation.



PVA synthetic fibers

Major Applications:

motorcycle rims, watch cases and bands, deburring various weldments



motorcycle rims



watch cases & bands



turbine blade



Nippon Tokushu Kento Co., Ltd.

Head office 18 Oike-cho, Kisshoin, Minami-ku, Kyoto, 601-8327, JAPAN
Tel:+81-75-691-5141 Fax:+81-75-672-3590

Tokyo office 5-8-25 Yayoi-cho, Nakano-ku, Tokyo, 164-0013, JAPAN
Tel:+81-3-5342-3751 Fax:+81-3-5342-3753

URL <https://www.nittokuken.co.jp/>
E-mail Sales@nittokuken.co.jp

Wheel specifications & Dimension table

FOR DRY USE ONLY!

Straight Type

Abrasive	Grit#	Grade	
		Bond	Density
AE	46	K	H
	54		
	60		
	90		
	120	HH	
	220		
	600		
	700		

low
↑
↓
high

Unit:mm

D \ T	19	25	32	50	75	100
150						
205						
255						
305						
355						

For other dimensions, please contact us.

Mounted Point Type

Unit:mm

Abrasive	Grit#	Grade		D×T×Axis D
		Bond	Density	
AE	46	K	H	13 × 13 × 3
	54			
	60			
	90	M	25 × 25 × 6	
	120			
	220			

Standard Physical Properties

AE46	AE54	AE60	AE90	AE120	AE220
KM	KM	KM	KM	KM	KM
[20D-8]	[18D-8]	[15D-8]	[15D-8]	[13D-7]	[12D-7]

Physical Properties Symbols

- $\frac{15}{①} \frac{D}{②} - \frac{8}{③}$ ①Young's Modulus: A large figure indicates harder structure.
Real Young's Modulus = ①×10MPa
②Measurement condition: "D" for dry condition.
③Strain(%): A large figure indicates higher elongation.

⚠ Cautions for operation

- Do not use beyond the maximum peripheral speed (m/s) indicated on each wheel or inspection card.
- Check all wheels before mounting, and do not use the wheel that has cracking, fractures or chipping.
- Use the equal-sized two flanges which is larger than half of wheel outer diameter.
- Protect oneself with safety cover against wheel breakage during operation.
- Do not leave the wheels in any place where it will be subjected to direct sunlight or high-temperature and humidity.
- Addition to the above cautions, always handle, store, and use wheels in a careful manner according to A.N.S.I. Safety Code B7.1.

AGENT